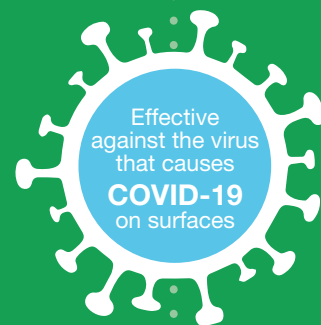


# 'clean between' each vaccine



**KEEP THE MAIN POINTS OF CONTACT CLEAN TO REDUCE THE RISK OF INFECTION**



Door handles



Chairs



Sharps bin



## Break the chain of transmission

Contaminated surfaces and equipment contribute to the transmission of bacteria and viruses, which can potentially lead to infection. By keeping the main points of contact clean you can ultimately reduce the risk of infection for both staff and patients when administering a COVID-19 vaccination.

Vital areas you should keep clean are both the entry and exit door handles, equipment at the vaccination site such as chairs used by patients; and equipment situated nearby like waste bins and sharps disposal tubs. You must maintain a high standard of hand hygiene throughout the day; by using hand disinfection gels before and after administering a vaccine, you can keep yourself and your patients safe from any microorganisms.



## THE 5 PRINCIPLES OF CLEANING

Please ensure that you follow the manufacturer's guidelines.



Wipe in an 'S' shaped pattern



Work from top to bottom



Wipe from clean to dirty



Ensure correct contact time



One wipe, one surface

Use biocides safely. Always read the label and product information before use.

JBN210127

**clinell**<sup>®</sup>

Full product information at [clinell.com](https://clinell.com)  
020 7993 0030  
[info@gamahealthcare.com](mailto:info@gamahealthcare.com)

**gama**  
healthcare